



## Ministry of Transportation

### Operational Services

Bancroft Area Office  
PO Box 300, 50 Monck Street  
Bancroft, ON K0L 1C0  
Tel: (613) 332-3220  
Fax: (613) 332-3751  
Toll Free: 1 (800) 554-0487

## Ministry of Transportation

### Operational Services

Port Hope Area Office  
138 Hope Street North  
Port Hope, ON L1A 2P1  
Tel: (905) 885-6381  
Fax: (905) 885-9273  
Toll Free: 1 (866) 224-0622

March 2014

**Attention: Candidate of Upcoming Municipal Election**

**Re: Placement of Election Signs Adjacent to a Provincial Highway System**

These documents are for information purposes due to the upcoming Municipal Election on October 27, 2014 providing guidelines on election sign placement.

The Ministry does allow the placing of election signs adjacent to provincial highways; however, sign placement is subject to the attached Election Sign Policy.

To avoid confusion on the part of candidates and volunteers/workers, I would ask that you please provide appropriate staff with this information. Signs placed in contravention of Ministry policy will be removed.

If further clarification is required, please feel free to contact the appropriate Corridor Management Officer in your area, as outlined in the attached Areas of Responsibility.

Thank you for your co-operation.

Yours truly,

A handwritten signature in blue ink, appearing to read "Louis Tay".

Louis Tay, P. Eng.  
Head, Corridor Management  
Eastern Region

cc Brenda Johnston, Corridor Management Officer  
Don Lawrence, Corridor Management Officer  
Barry Yandt, Corridor Management Officer  
Lori Yaraskovitch, Corridor Management Officer  
Dave Harris, Maintenance Superintendent  
John Potts, Maintenance Superintendent  
Lloyd George, Superintendent of Construction & Operations, Carillion Canada  
Wayne Hasler, Operations Manager, Ottawa, High Road Maintenance

# Election Sign Policy

---

Under the authority of the Public Transportation and Highway Improvement Act the Ministry through the issuance of a permit controls all visible signing upon or within 400 metres of the provincial highway right-of-way.

Election signs placed by, or on behalf of, a candidate or a political party and signs designed to encourage citizens to vote must follow these restrictions governing election signs that are visible from a provincial highway system.

1. An election sign **must not** be placed upon or adjacent to the right-of-way of a Class 1 - Freeway or a Class 2 - Staged Freeway (i.e. Hwy 401, 115, etc). See attached typical diagram for freeway/staged freeway interchange election sign placement.
2. Election signs may be erected on the right-of-way or adjacent to a Special Controlled Access, Major or Minor Highway (i.e. Hwy 7, Hwy 35) **after an official election has been issued** or for **municipal elections** in accordance with any By-Law outlining a time frame for the placement of municipal election campaign signs.
3. Signs up to 0.7 m<sup>2</sup> (8 sq. ft.) in size **must be** placed at least 4 m (12 ft.) from edge of pavement. Signs over 0.7 m<sup>2</sup> (8 sq. ft.) and up to 3.7 m<sup>2</sup> (40 sq. ft.) **must be** placed at the outer limit of the right-of-way (i.e. fence line). Election signs **must not** exceed 3.7 m<sup>2</sup> (40 sq. ft.).
4. An "election sign" **must not** be affixed to a permanent or an official sign or to guide rail or other highway structure or facility and **must not** be placed where it may interfere with visibility, an official sign, traffic signal, or other safety device.
5. Portable read-o-graph sign trailers **must not** be placed upon a provincial highway right-of-way. Portable read-o-graph sign trailers may be utilized providing they are erected on private property that is zoned commercial and meets all the requirements of the ministry for portable read-o-graph signing.
6. A Sign Permit or a Letter of Approval for any signs erected under these instructions is not required.
7. Election signs **must be** removed from the Ministry right-of-way and adjacent properties within three (3) working days after Election Day.
8. Signs not retrieved by this time will be picked up by the Ministry patrol forces and stored in a safe place (patrol yard, etc.) for a period of two weeks. After this time they will be disposed of.

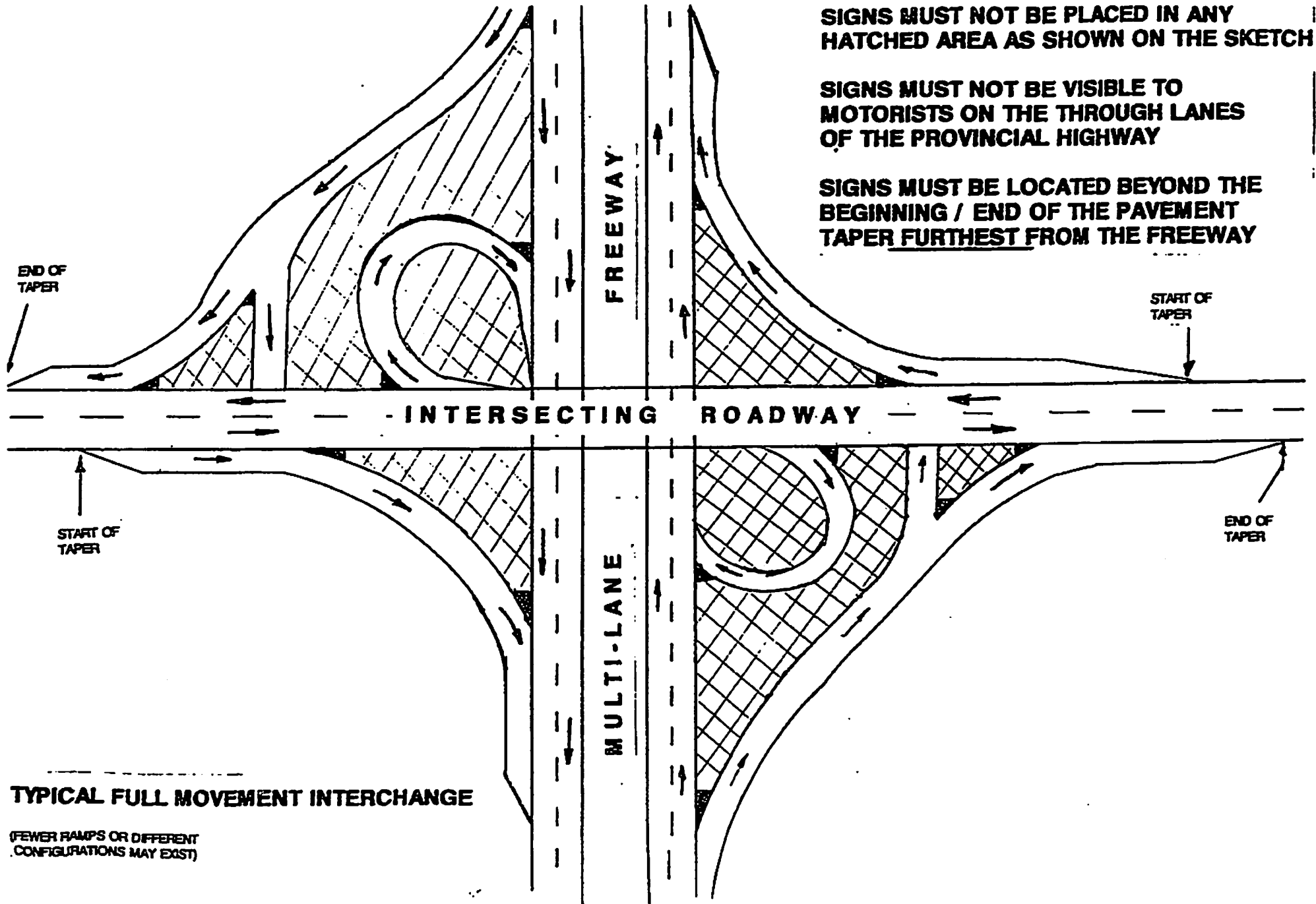
Please contact a Corridor Management Officer in your area, with the telephone numbers provided below, to obtain additional information. Thank you for your co-operation.

---

**Ministry of Transportation  
Operational Services  
Bancroft Area Office**  
50 Monck Street  
Bancroft, ON K0L 1C0  
Tel. No.: (613) 332-3220  
Toll Free: 1-800-554-0487  
Fax No.: (613) 332-3751

---

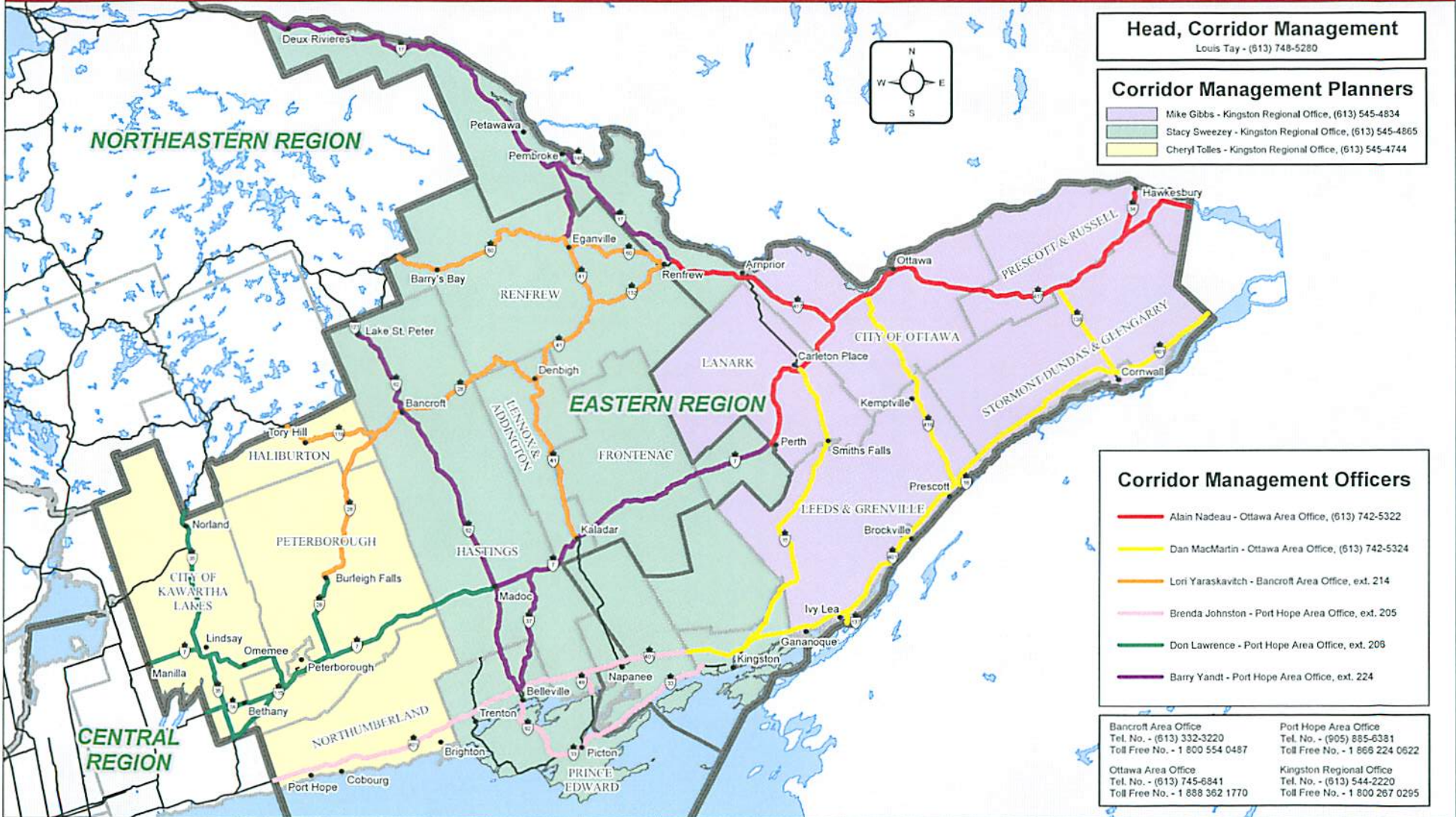
**Ministry of Transportation  
Operational Services  
Port Hope Area Office**  
138 Hope Street North  
Port Hope ON L1A 2P1  
Tel No.: (905) 885-6381  
Toll Free: 1-866-224-0622  
Fax No.: (905) 885-9273



**TYPICAL FULL MOVEMENT INTERCHANGE**

(FEWER RAMPS OR DIFFERENT CONFIGURATIONS MAY EXIST)

# Corridor Management - Areas of Responsibility



**Head, Corridor Management**  
Louis Tay - (613) 748-5280

**Corridor Management Planners**

- Mike Gibbs - Kingston Regional Office, (613) 545-4834
- Stacy Sweezy - Kingston Regional Office, (613) 545-4865
- Cheryl Tolles - Kingston Regional Office, (613) 545-4744

**Corridor Management Officers**

- Alain Nadeau - Ottawa Area Office, (613) 742-5322
- Dan MacMartin - Ottawa Area Office, (613) 742-5324
- Lori Yaraskavitch - Bancroft Area Office, ext. 214
- Brenda Johnston - Port Hope Area Office, ext. 205
- Don Lawrence - Port Hope Area Office, ext. 206
- Barry Yandt - Port Hope Area Office, ext. 224

Bancroft Area Office Tel. No. - (613) 332-3220 Toll Free No. - 1 800 554 0487	Port Hope Area Office Tel. No. - (905) 885-6381 Toll Free No. - 1 866 224 0622
Ottawa Area Office Tel. No. - (613) 745-6841 Toll Free No. - 1 888 362 1770	Kingston Regional Office Tel. No. - (613) 544-2220 Toll Free No. - 1 800 267 0295

**Ministry of Transportation**  
**Corridor Management Officer – Geographical Areas of Responsibility**  
**Provincial Highways Management**

**Don Lawrence, Corridor Management Officer, Port Hope Area Office**  
**866-224-0622 Ext. 206**

<b>HWY</b>	<b>FROM</b>	<b>TO</b>
7	Durham Region boundary, Regional Rd 2, Manilla, easterly	Hwy #62 Madoc
7A	Durham Region boundary, Nesbitt Line, easterly	Hwy #115
115	Durham Region boundary, Boundary Road, northerly	The Parkway interchange, Peterborough
35	Durham Region boundary, Boundary Road, northerly	Haliburton/Victoria County boundary
28	Hwy #7, Peterborough, Northerly	County Road 36 – Burleigh Falls

**Brenda Johnston, Corridor Management Officer, Port Hope Area Office**  
**866-224-0622 Ext. 205**

<b>HWY</b>	<b>FROM</b>	<b>TO</b>
33	Hwy #62, Bloomfield, easterly	Collins Bay Road, Kingston
62	Hwy #401, Belleville, southerly	Hwy #33 Bloomfield
49	Tyendinaga Twp. boundary, southerly	Hwy #49, Bay of Quinte Bridge – south end
401	Durham Region / Northumberland County boundary, McCullough / East Town Line Rd, easterly	Lennox Addington Boundary

**Ministry of Transportation**  
**Operational Services**  
**Bancroft Area Office**  
 50 Monck Street  
 Bancroft, ON K0L 1C0  
 Tel. No.: (613) 332-3220  
 Toll Free: 1-800-554-0487  
 Fax No.: (613) 332-3751

**Ministry of Transportation**  
**Operational Services**  
**Port Hope Area Office**  
 138 Hope Street North  
 Port Hope ON L1A 2P1  
 Tel No.: (905) 885-6381  
 Toll Free: 1-866-224-0622  
 Fax No.: (905) 885-9273

**Ministry of Transportation  
Corridor Management Officer – Geographical Areas of Responsibility**

**Provincial Highways Management**

**Barry Yandt, Corridor Management Officer, Port Hope Area Office  
866-224-0622 Ext. 224**

HWY	FROM	TO
7	Hwy #62 Madoc	West limit of the Town of Perth
17	Renfrew, westerly	Deux Rivieres
37	Hwy #401, northerly	Hwy #7
41	Eganville, northerly	Pembroke
62	Hwy #62, Belleville, northerly	Bancroft
148	Pembroke	Quebec boundary, Des Allumettes Bridge

**Lori Yaraskavitch, Corridor Management Officer, Bancroft Area Office  
800-554-0487 Ext. 214**

HWY	FROM	TO
28	County Road 36, Burleigh Falls, northerly	Hwy #41, Denbigh
41	Hwy #7 Kaladar, northerly	Hwy #60, Eganville
60	Eganville, westerly	Nipissing Boundary
118	Bancroft Area boundary at Trappers Trail, easterly	Hwy #28, Paudash
132	Town of Renfrew, west Limit, westerly	Hwy #41
127	Hwy #62 Maynooth, northerly	South Mackenzie Lake
7025	Hwy #60, Hillcrest Ave., north of Wilno, easterly	A point on Hwy #60 for 0.80 km

**Ministry of Transportation  
Operational Services  
Bancroft Area Office**  
50 Monck Street  
Bancroft, ON K0L 1C0  
Tel. No.: (613) 332-3220  
Toll Free: 1-800-554-0487  
Fax No.: (613) 332-3751

**Ministry of Transportation  
Operational Services  
Port Hope Area Office**  
138 Hope Street North  
Port Hope ON L1A 2P1  
Tel No.: (905) 885-6381  
Toll Free: 1-866-224-0622  
Fax No.: (905) 885-9273