

Missing Link Snowmobile Club



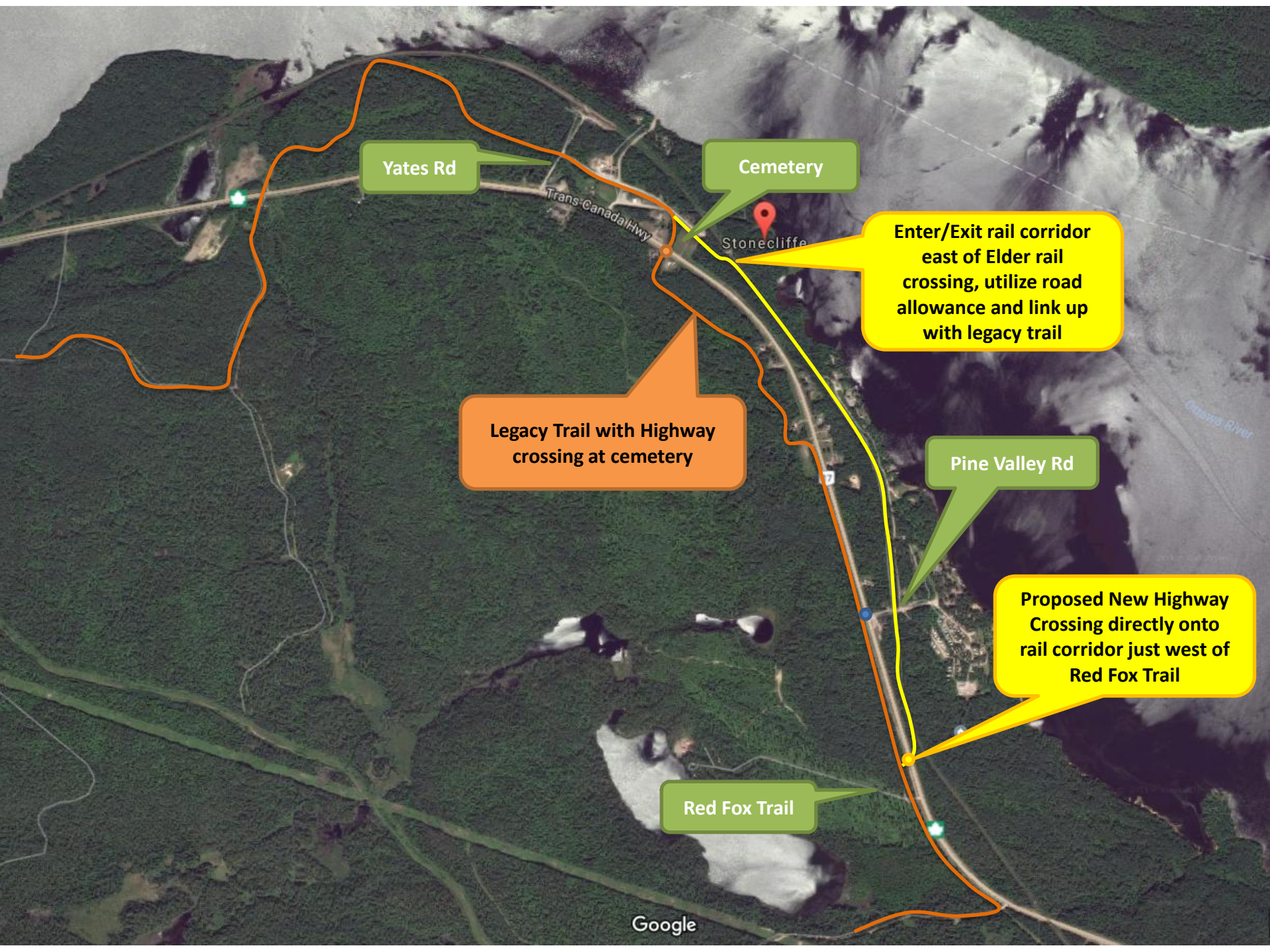
Stonecliffe Trail Update

June 12th, 2018

New Trail Option



- We believe we have found a trail option whereby:
 - Avoids the use of the rail corridor through the village
 - It primarily maintains the route of the legacy trail, the preferred option of town residents
 - Local residents concerns are addressed, in particular noise and speed/safety issues
 - It addresses the uncertainty around the continued landowner permission surrounding the Demarco property
 - The snowmobile club's highway crossing safety concerns are addressed
 - The trail remains adjacent to the township hall and Yates General Store



Yates Rd

Cemetery

Stonecliffe

Enter/Exit rail corridor
east of Elder rail
crossing, utilize road
allowance and link up
with legacy trail

Legacy Trail with Highway
crossing at cemetery

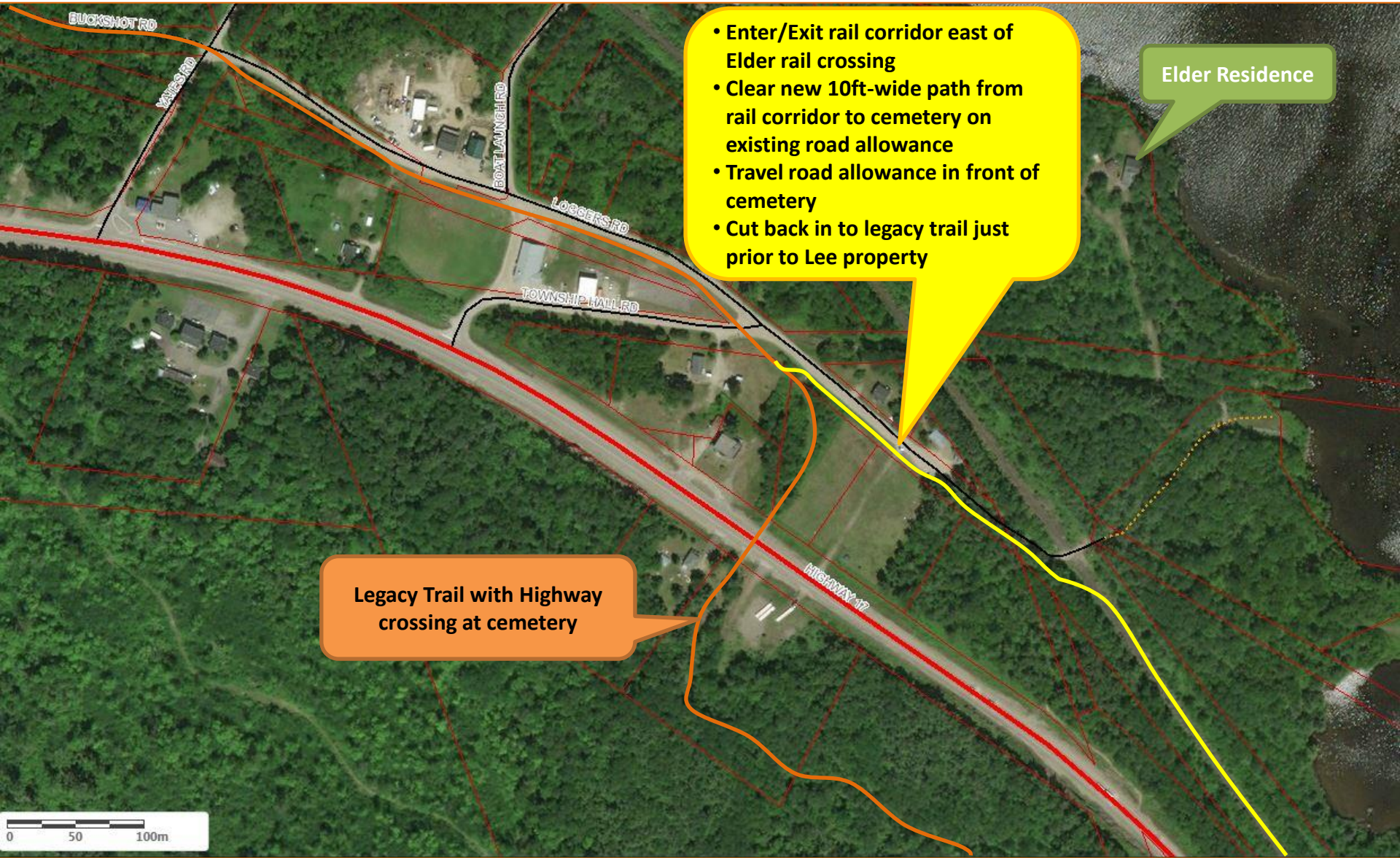
Pine Valley Rd

Proposed New Highway
Crossing directly onto
rail corridor just west of
Red Fox Trail

Red Fox Trail

Google

Stonecliffe Exploded View



- Enter/Exit rail corridor east of Elder rail crossing
- Clear new 10ft-wide path from rail corridor to cemetery on existing road allowance
- Travel road allowance in front of cemetery
- Cut back in to legacy trail just prior to Lee property

Elder Residence

Legacy Trail with Highway crossing at cemetery

Photos



Next Steps



- The snowmobile club is looking for municipal collaboration in the following areas:
 - Need to look at winter plowing needs at far end of cemetery
 - Permission to cut timber and clear new trail on road allowance from cemetery to rail corridor
 - Approval to extend use of the road allowance along Logger's Road
 - Approval to cross Pine Valley Road at rail corridor
 - Permission to cut brush back to road allowance property line along Logger's Road to provide room for new trail
- Need to consult Hydro One regarding the relocation of a guy wire at the west corner of the cemetery
- Mark route for new trail clearing
 - Finalize agreement from landowners
 - Assign construction work
 - Can provincial grants help?
- As previously proposed, the snowmobile club would acquire and install new signage in an effort to curb speed through the town, such as:
 - 20km/hr speed limit
 - Community Safety Corridor
 - Slow Down or Lose the Trail
 - Use of oversized 'Stop' signs at key safety intersections
 - Etc....